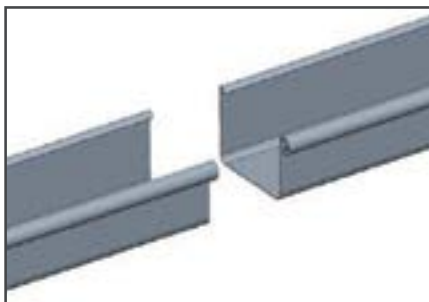
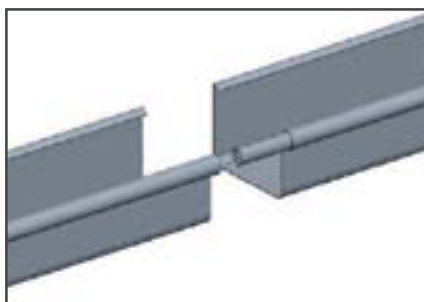




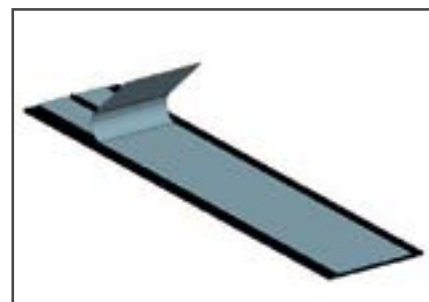
- BOX GUTTER



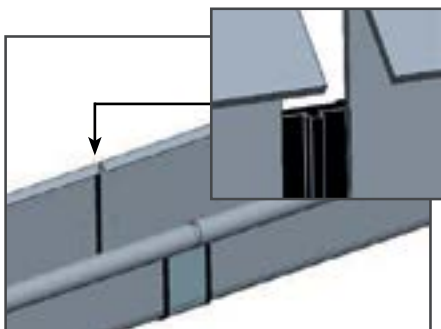
1. Clean the outer surfaces at the edges of both the lengths of gutter to be joined with a suitable cleaning agent (And if lengths have been cut down, deburr the ends).



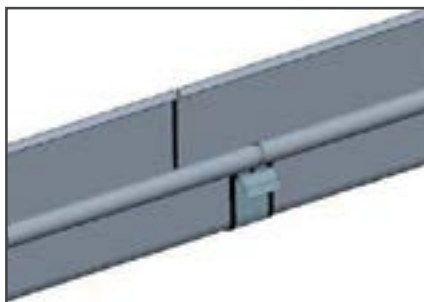
2. Insert the bead connector halfway into the front 'bead/rolls' of both gutters, leaving an approx. 5 mm gap between the ends of the two gutter



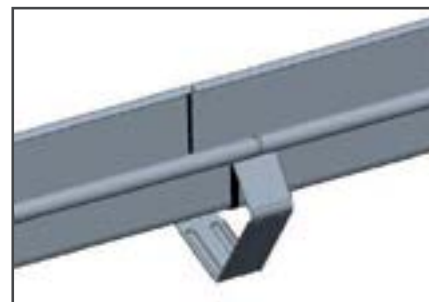
3. Remove the protection film from the adhesive surface (on ridged side) of the rubber sealing strip.



4. Attach the sealing strip over both ends of the gutters, starting at the 'bead/roll' at the front edge. Keep a slight tension on the strip to stretch round to the back while also smoothing/pressing down for a good bond.



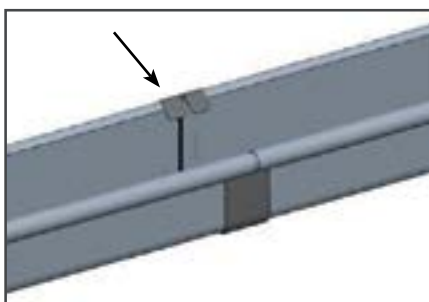
5. Remove the remaining protection film from the rubber sealing strip's final adhesive surface.



6. Attaching the box gutter connector: Hook the connector onto the bead at the front first, then pressing onto the adhesive surfaces of the seal throughout, wrap it around the gutter lengths over the join to the back.

Note: The 'ridge' on the rubber sealing should be facing (into) the gutter.

NB. The end/last fascia bracket on the gutter run should be placed 30 cm from the gutter end or corner. Gutter angles/corners are supported by two unions and don't require their own fascia bracket - this is sufficient.



7. Finally fold the flaps at the back of the connector over the rear fold of the gutter lengths.

TIP - Try to keep pressing down on the entire surface of the rubber seal (as much as possible) throughout to encourage a good bond over the entire length of each seal.

N.B. Wear gloves when installing Plain Galv Steel: The Plain Galv will dull over time. Touching it without gloves breaks through the oily surface and starts the weathering process earlier in those areas. In a few months the 'weathering' will catch up all over.

Stopend install videos: visit [youtube.com/Rainclearsys](https://www.youtube.com/Rainclearsys) to watch the 'Glue-in' or 'Seaming' methods for Galvanised Steel gutter stopends or add the **prefabricated onto 1m length** versions to your basket.

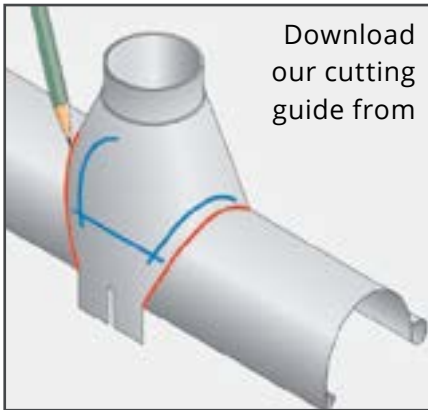




Infinity downpipes are available as a circular profile in 3 sizes with a range of pipe clips and fittings to accommodate all types of installation situations. The downpipes and offsets are push-fit with 'swaged' ends, again for fast and watertight installation.

The assembly and installation must be considered individually depending on the project, although general aspects of preparation are common to all as shown below.

Wrap-around Outlet (★ alternatively use prefab outlets)



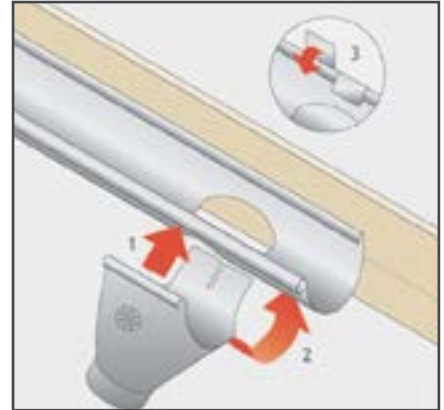
1. When installing a 'wrap around outlet' mark the desired location of the outlet by drawing a line either side of the outlet along its edge. Draw another line 20mm inside of the outer lines and join these



2. Use a hacksaw to make an initial hole in the gutter, and then use a set of tin snips to

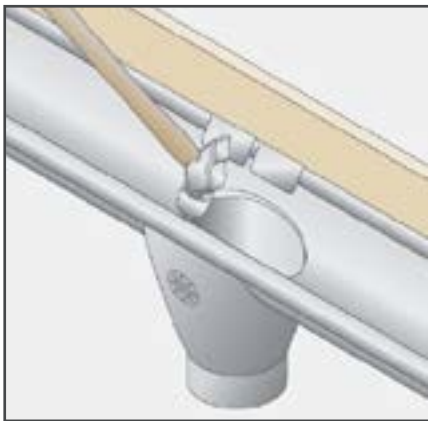


N.B. NEVER CUT WITH A SPINNING BLADE - zinc fumes released when galv

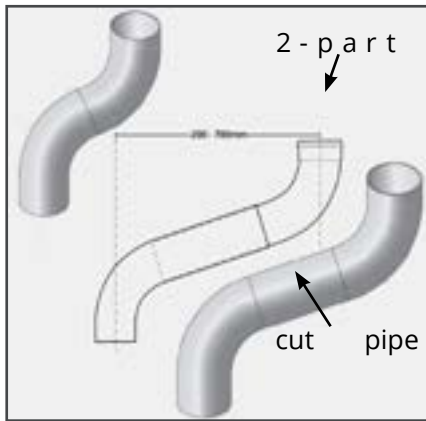


3. Attach the outlet to the gutter and fold the rear tabs of the outlet over the rear edge of the gutter, making sure the outlet is aligned correctly to accept the downpipe.

Downpipes



4. Tap the inner rough edges of the hole that was cut in the gutter, down into the outlet, to



ensure a smooth flow of water.
5. Offsets are achieved using either the 60mm fixed offset, 2no. 70° bends, the 2-part variableoffset(for upto 700mm) or, for larger projections, by inserting a cut pipe length



6. Downpipes should be installed using at least 2/no pipe clips per length. Mark out the clips locations and level with a spirit level or plumb line.

Choose either the standard Fixed Depth clip or M10 Boss Adjustable Depth downpipe clip (the standard one for the Copper system)



★ alternatively choose to use prefabricated outlets
don't forget to order additional gutter unions!

